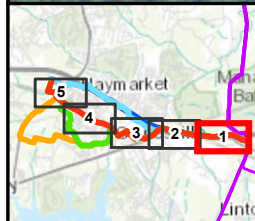


Existing Dominion
Transmission Line



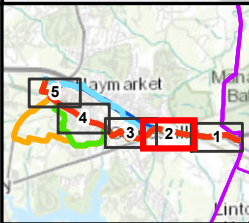
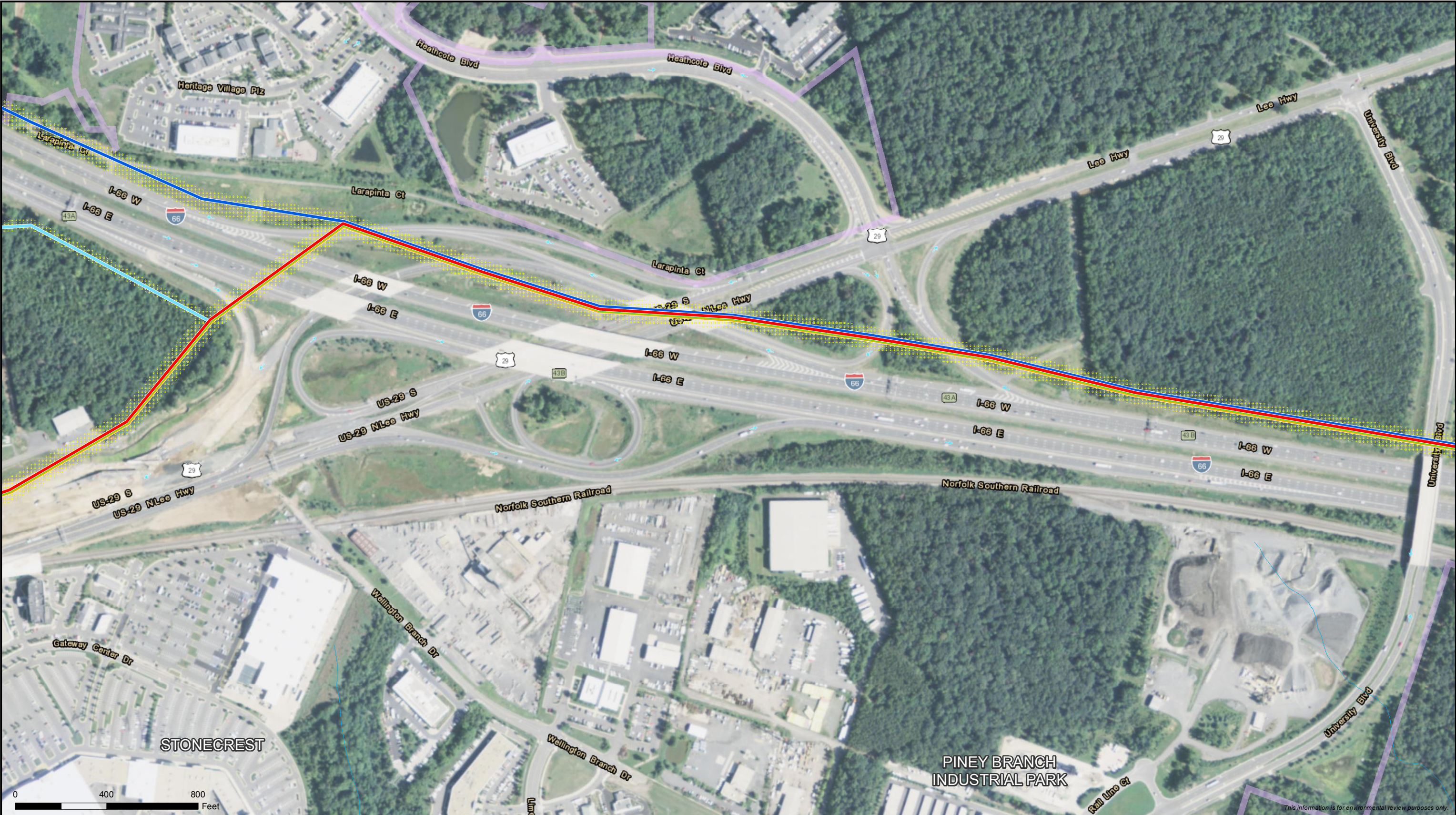
- | | | |
|--|---|---|
| — Railroad Alternative | ⋯ Right of Way | — Stream |
| — Carver Road Alternative | — Planned Development | — Existing Dominion
Transmission Line |
| — I-66 Hybrid Alternative | | |
| — Proposed Route | | |
| — Madison Alternative | | |



Railroad Alternative Map Set
Gainesville to Haymarket 230kV
Transmission Line and Substation Project
 Page 1 of 5
 FILED - November 5, 2015



This information is for environmental review purposes only.



- Railroad Alternative
- Carver Road Alternative
- I-66 Hybrid Alternative
- Proposed Route
- Madison Alternative
- Right of Way
- Planned Development
- Stream



1:4,800



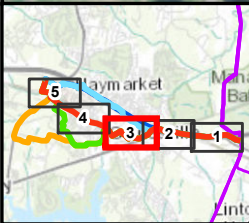
an ERM Group company

Railroad Alternative Map Set
Gainesville to Haymarket 230kV
Transmission Line and Substation Project
Page 2 of 5
FILED - November 5, 2015





This information is for environmental review purposes only.

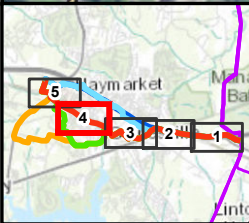


- Railroad Alternative
- Carver Road Alternative
- I-66 Hybrid Alternative
- Proposed Route
- Madison Alternative
- Right of Way
- Planned Development
- Stream



Railroad Alternative Map Set
Gainesville to Haymarket 230kV
Transmission Line and Substation Project
Page 3 of 5
FILED - November 5, 2015



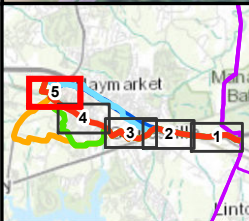
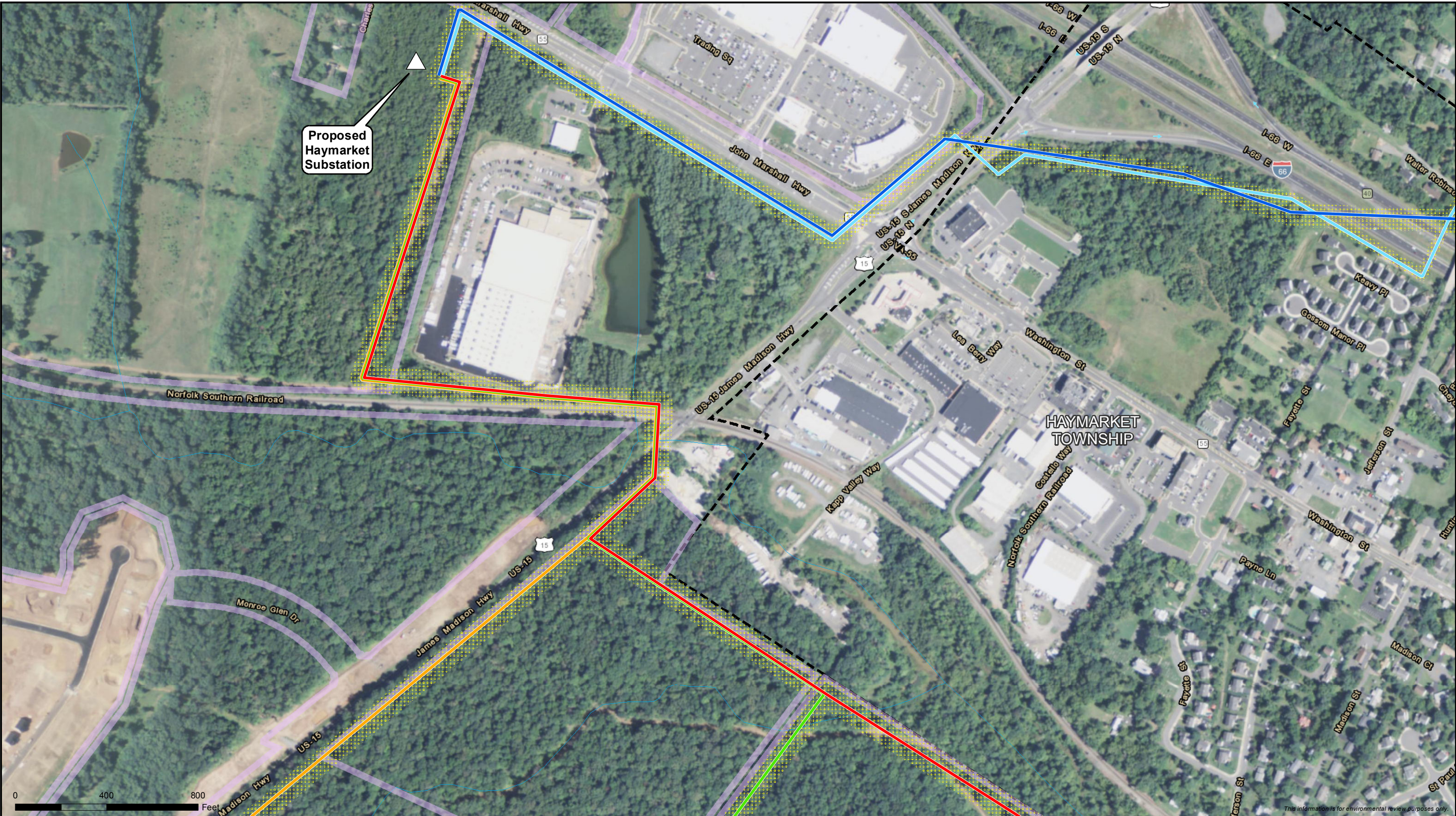


- Railroad Alternative
- Carver Road Alternative
- Madison Alternative
- Right of Way
- Planned Development
- Stream
- Haymarket Township Boundary



Railroad Alternative Map Set
Gainesville to Haymarket 230kV
Transmission Line and Substation Project
Page 4 of 5
FILED - November 5, 2015





- Railroad Alternative
- Carver Road Alternative
- I-66 Hybrid Alternative
- Proposed Route
- Madison Alternative
- Right of Way
- Planned Development
- Stream
- Proposed Haymarket Substation
- Haymarket Township Boundary



1:4,800



an ERM Group company

Railroad Alternative Map Set
Gainesville to Haymarket 230kV
Transmission Line and Substation Project
Page 5 of 5
FILED - November 5, 2015



This information is for environmental review purposes only.