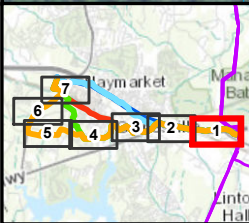


Existing Dominion
Transmission Line

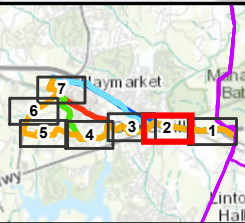
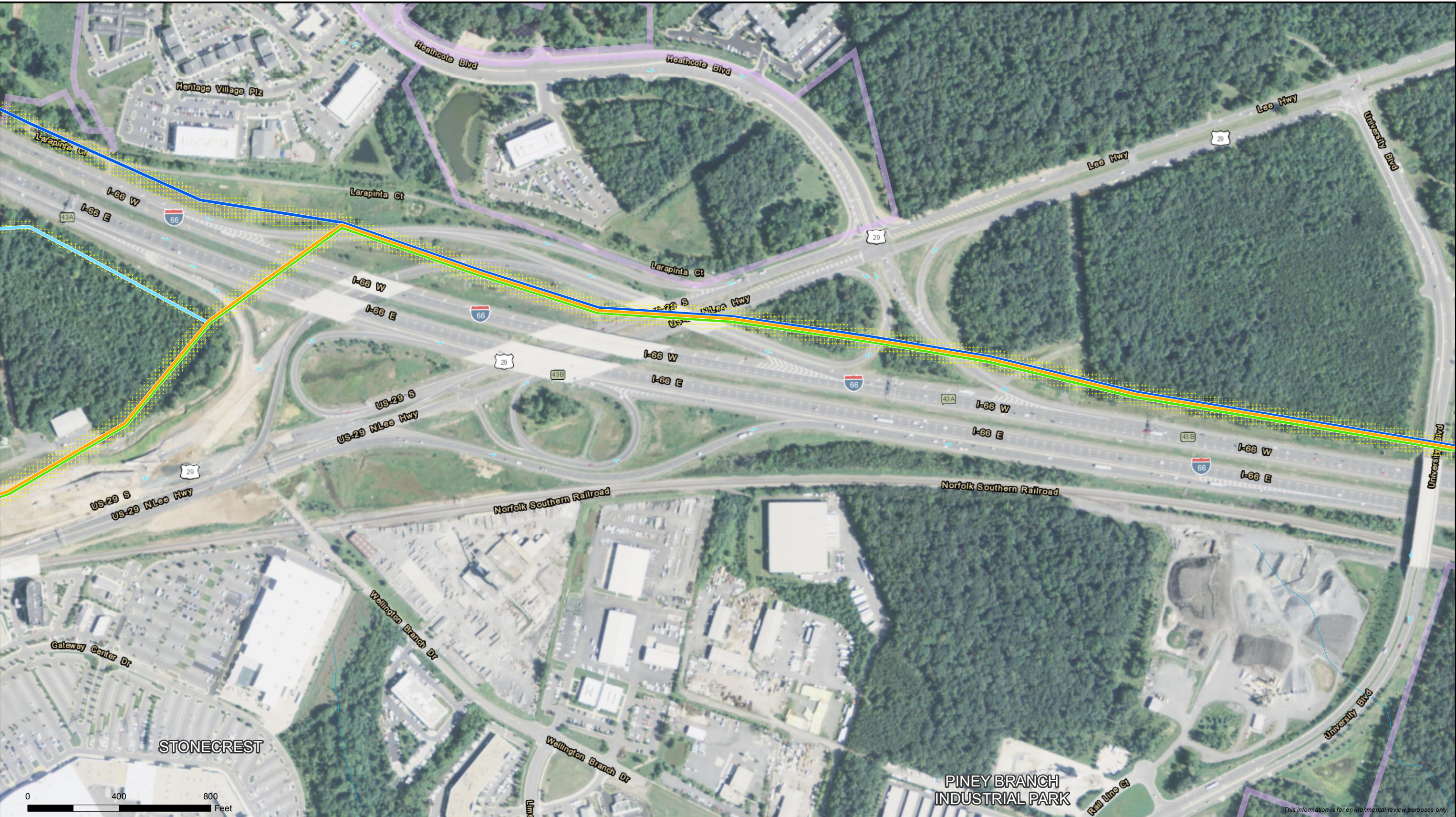


- | | | |
|---------------------------|---------------------|--|
| — Madison Alternative | Right of Way | — Stream |
| — Carver Road Alternative | Planned Development | Existing Dominion
Transmission Line |
| — I-66 Hybrid Alternative | | |
| — Proposed Route | | |
| — Railroad Alternative | | |



Madison Alternative Map Set
Gainesville to Haymarket 230kV
Transmission Line and Substation Project
Page 1 of 7
FILED - November 5, 2015



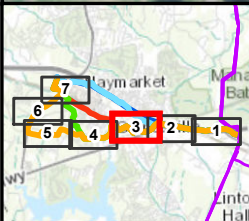


- Madison Alternative
- Carver Road Alternative
- I-66 Hybrid Alternative
- Proposed Route
- Railroad Alternative
- Right of Way
- Planned Development
- Stream



Madison Alternative Map Set
Gainesville to Haymarket 230kV
Transmission Line and Substation Project
Page 2 of 7
FILED - November 5, 2015





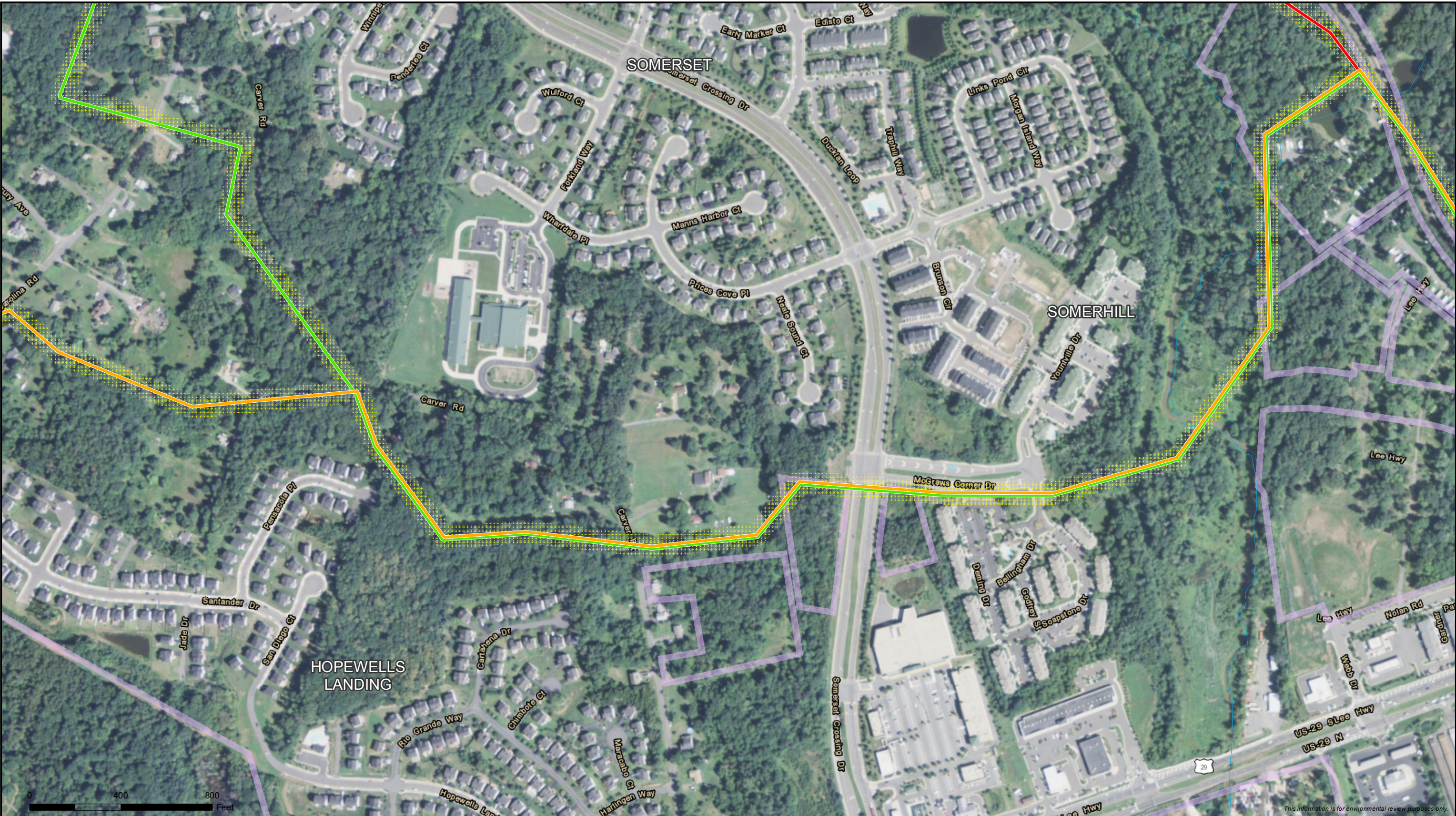
- Madison Alternative
- Carver Road Alternative
- I-66 Hybrid Alternative
- Proposed Route
- Railroad Alternative
- Right of Way
- Planned Development
- Stream



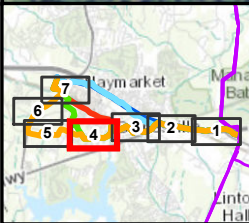
Madison Alternative Map Set
Gainesville to Haymarket 230kV
Transmission Line and Substation Project
Page 3 of 7
FILED - November 5, 2015



STONECREST
This information is for environmental review purposes only.



This information is for environmental review purposes only.



- Madison Alternative
- Carver Road Alternative
- Railroad Alternative
- Right of Way
- Planned Development
- Stream

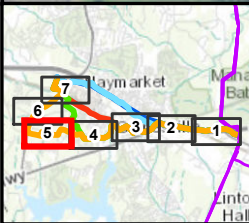


Madison Alternative Map Set
Gainesville to Haymarket 230kV
Transmission Line and Substation Project
Page 4 of 7
FILED - November 5, 2015





This information is for environmental review purposes only.



- Madison Alternative
- Right of Way
- Stream
- Planned Development

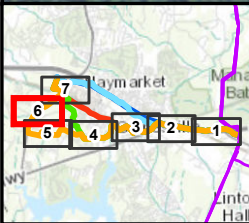


Madison Alternative Map Set
Gainesville to Haymarket 230kV
Transmission Line and Substation Project
Page 5 of 7
FILED - November 5, 2015





This information is for environmental review purposes only.

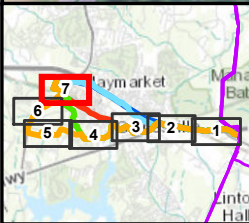
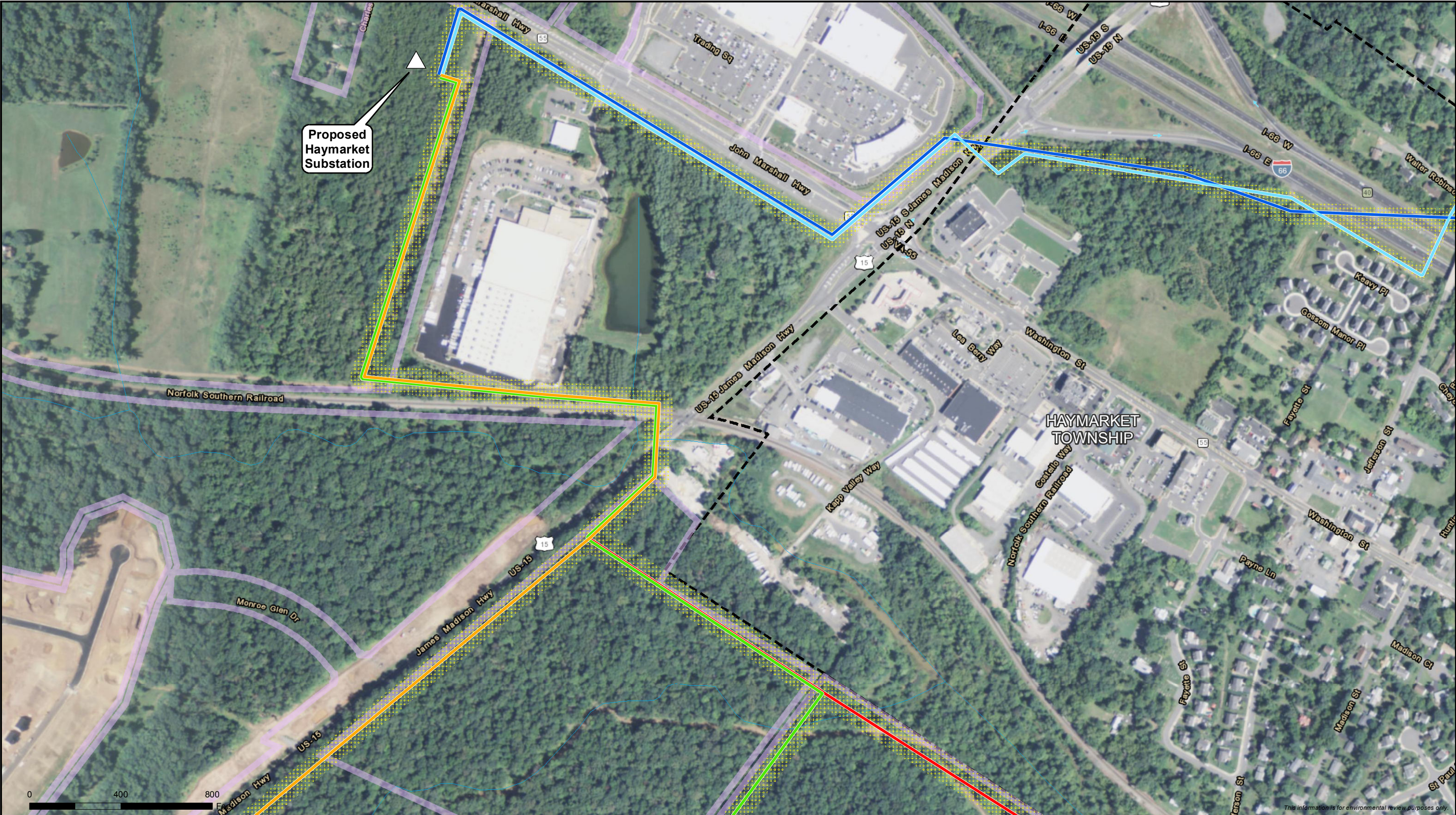


- Madison Alternative
- Right of Way
- Stream
- Planned Development



Madison Alternative Map Set
Gainesville to Haymarket 230kV
Transmission Line and Substation Project
Page 6 of 7
FILED - November 5, 2015





- Madison Alternative
- Carver Road Alternative
- I-66 Hybrid Alternative
- Proposed Route
- Railroad Alternative
- Right of Way
- Planned Development
- Stream
- Proposed Haymarket Substation
- Haymarket Township Boundary



Madison Alternative Map Set
Gainesville to Haymarket 230kV
Transmission Line and Substation Project
Page 7 of 7
FILED - November 5, 2015

