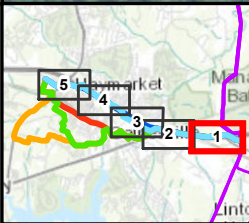


Existing Dominion
Transmission Line



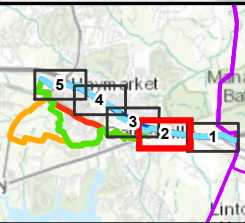
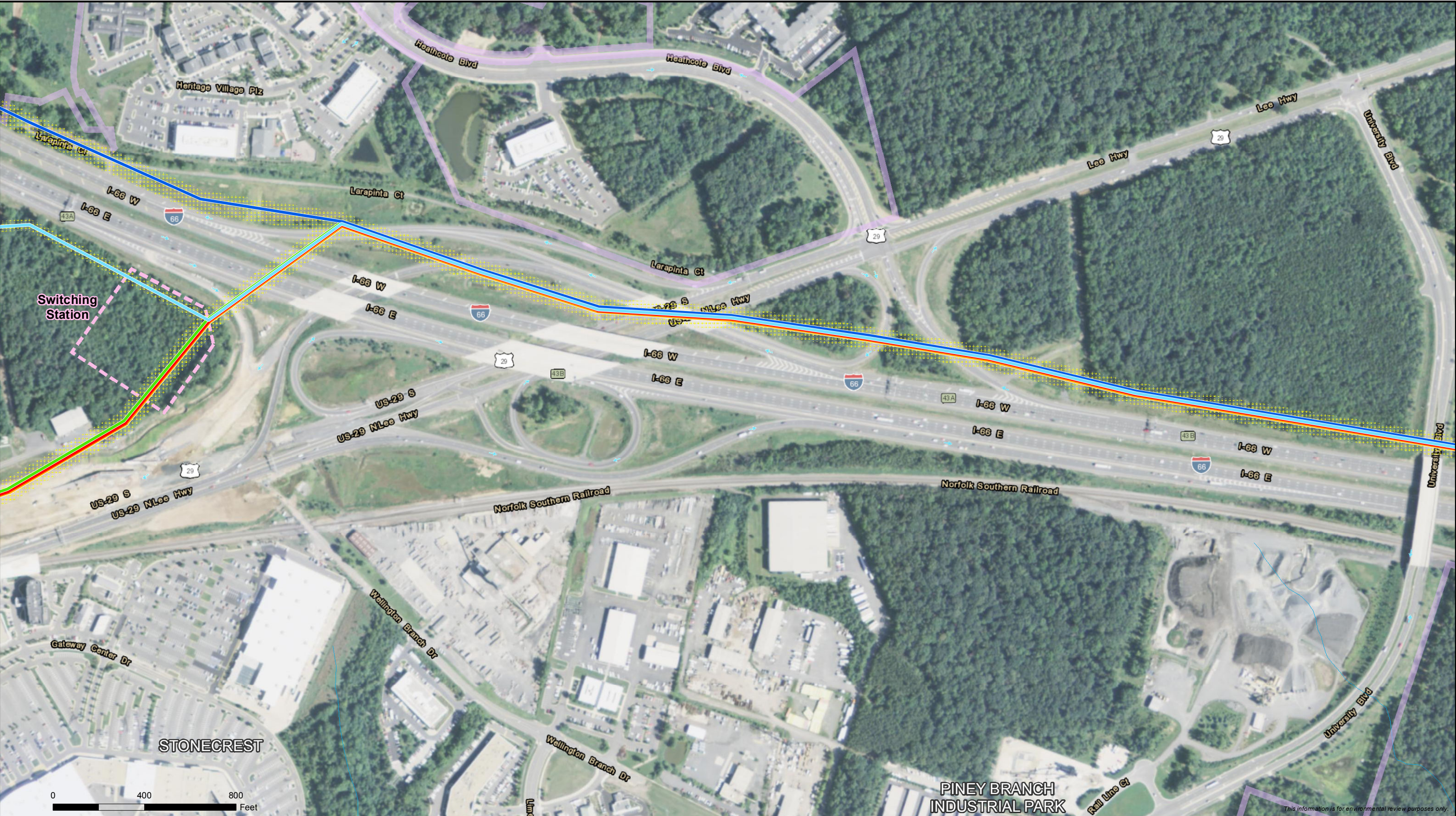
- | | | |
|---|--|--|
| <ul style="list-style-type: none">I-66 Hybrid AlternativeProposed RouteCarver Road AlternativeMadison AlternativeRailroad Alternative | <ul style="list-style-type: none">Right of WayPlanned Development | <ul style="list-style-type: none">StreamExisting Dominion Transmission Line |
|---|--|--|



I-66 Hybrid Alternative Map Set
Gainesville to Haymarket 230kV
Transmission Line and Substation Project
Page 1 of 5
FILED - November 5, 2015



This information is for environmental review purposes only.

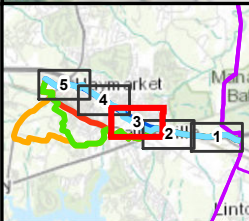


- | | | |
|-------------------------|---------------------|---|
| I-66 Hybrid Alternative | Right of Way | Stream |
| Proposed Route | Planned Development | Preliminary Location of Switching Station |
| Carver Road Alternative | | |
| Madison Alternative | | |
| Railroad Alternative | | |



I-66 Hybrid Alternative Map Set
Gainesville to Haymarket 230kV
Transmission Line and Substation Project
Page 2 of 5
FILED - November 5, 2015



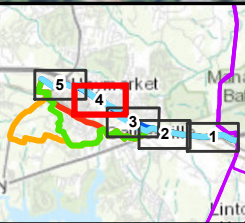
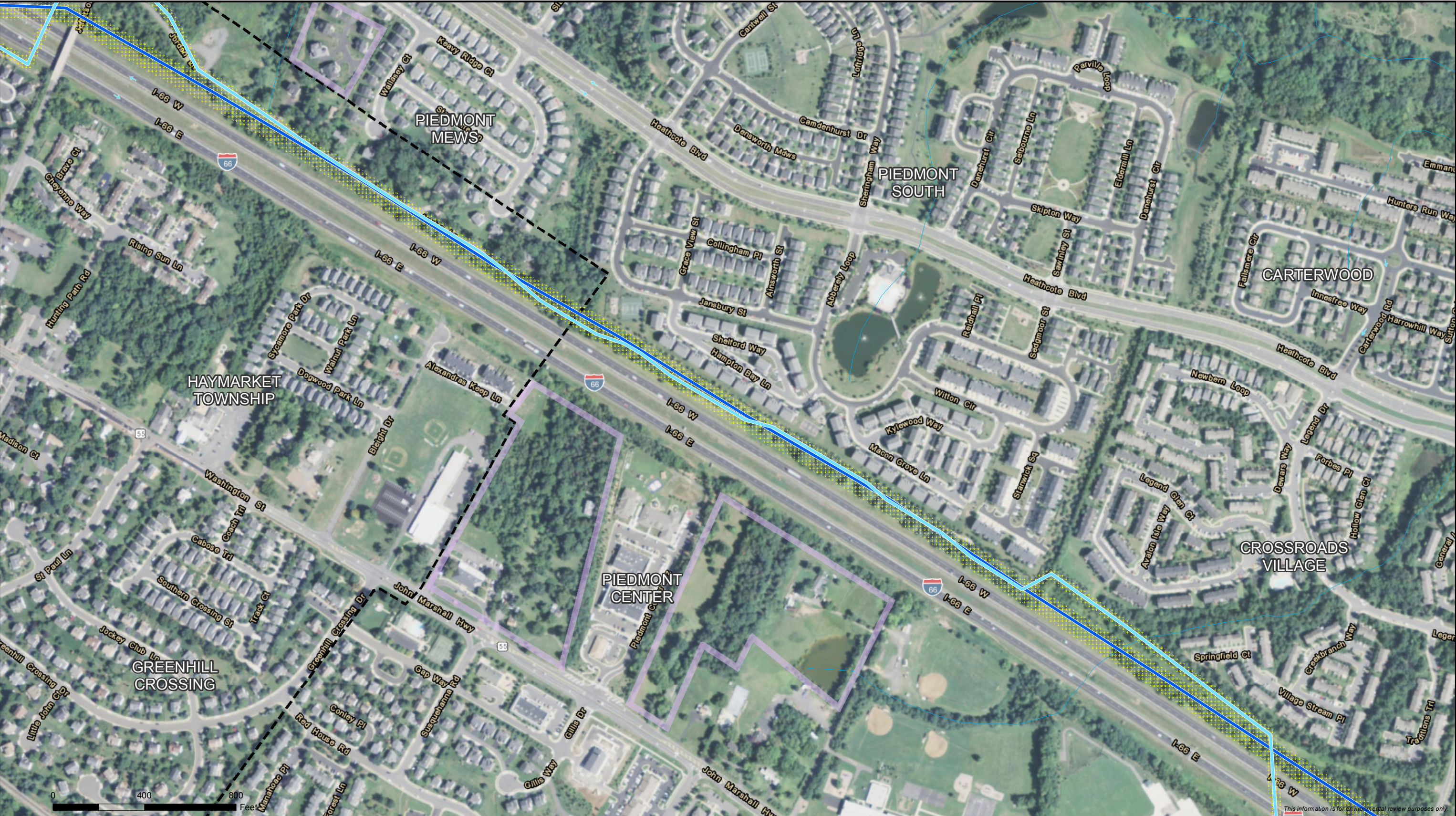


- I-66 Hybrid Alternative
- Proposed Route
- Carver Road Alternative
- Madison Alternative
- Railroad Alternative
- Right of Way
- Planned Development
- Stream
- Preliminary Location of Switching Station



I-66 Hybrid Alternative Map Set
Gainesville to Haymarket 230kV
Transmission Line and Substation Project
Page 3 of 5
FILED - November 5, 2015



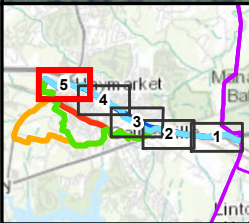


- I-66 Hybrid Alternative
- Proposed Route
- Right of Way
- Planned Development
- Stream
- Haymarket Township Boundary



I-66 Hybrid Alternative Map Set
Gainesville to Haymarket 230kV
Transmission Line and Substation Project
Page 4 of 5
FILED - November 5, 2015





- I-66 Hybrid Alternative
- Proposed Route
- Carver Road Alternative
- Madison Alternative
- Railroad Alternative
- Right of Way
- Planned Development
- Stream
- Proposed Haymarket Substation
- Haymarket Township Boundary



I-66 Hybrid Alternative Map Set
Gainesville to Haymarket 230kV
Transmission Line and Substation Project
Page 5 of 5
FILED - November 5, 2015

