

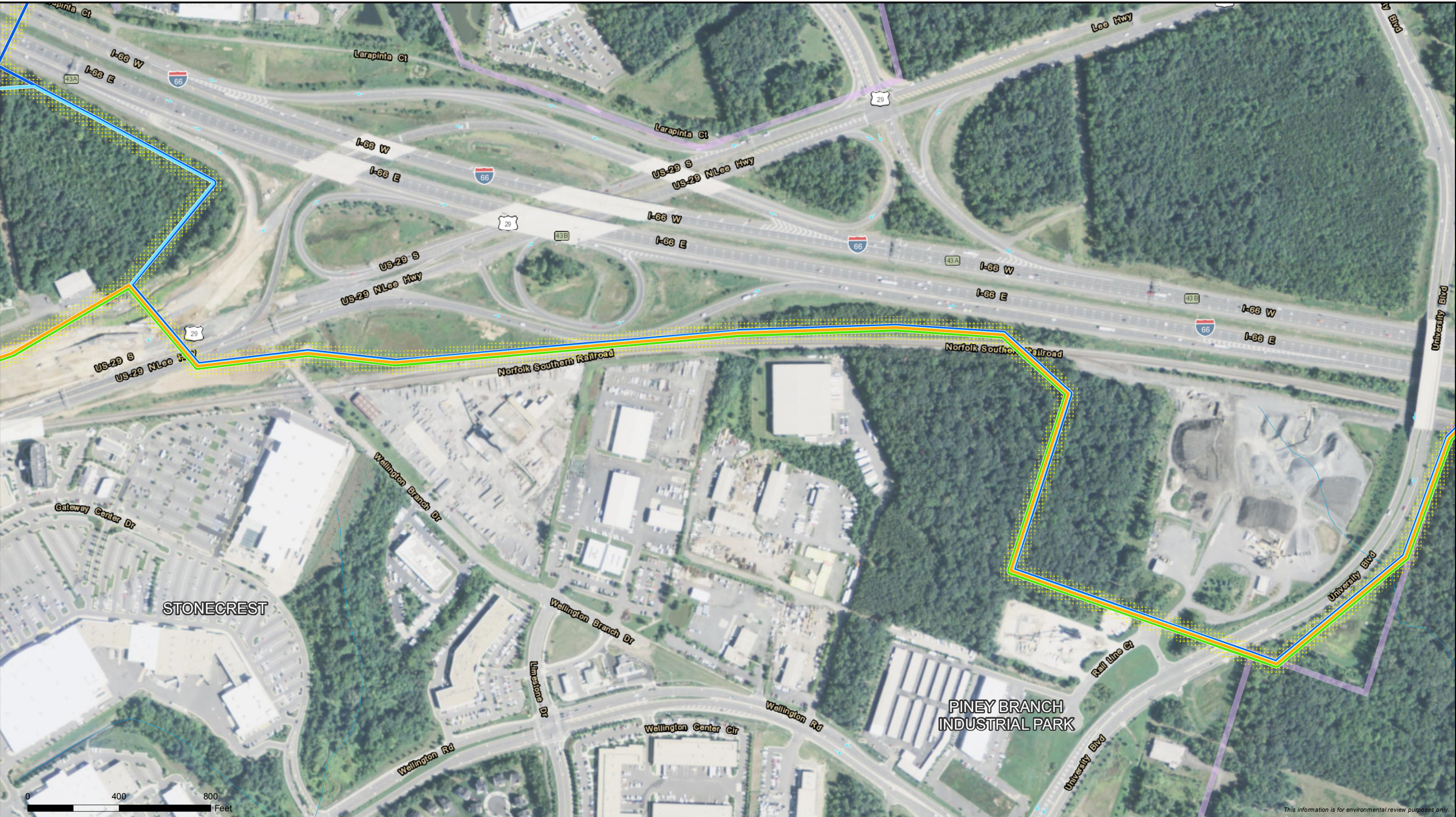
- |                             |                     |                       |
|-----------------------------|---------------------|-----------------------|
| — Madison Alternative       | Right of Way        | — Stream              |
| — Carver Road Alternative   | Planned Development | ▲ Existing Substation |
| — I-66 Hybrid Alternative   |                     | Existing Dominion     |
| — I-66 Overhead Alternative |                     | Transmission Line     |
| — Railroad Alternative      |                     |                       |



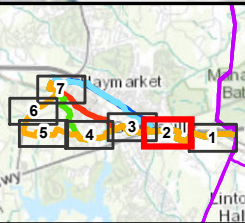
**Madison Alternative Map Set**  
**Gainesville to Haymarket 230kV**  
**Transmission Line and Substation Project**  
Page 1 of 7  
DRAFT - 7/15/2015



This information is for environmental review purposes only.



This information is for environmental review purposes only.

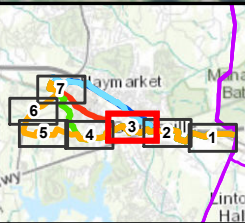


- Madison Alternative
- Carver Road Alternative
- I-66 Hybrid Alternative
- I-66 Overhead Alternative
- Railroad Alternative
- Right of Way
- Planned Development
- Stream



**Madison Alternative Map Set**  
**Gainesville to Haymarket 230kV**  
**Transmission Line and Substation Project**  
Page 2 of 7  
DRAFT - 7/15/2015





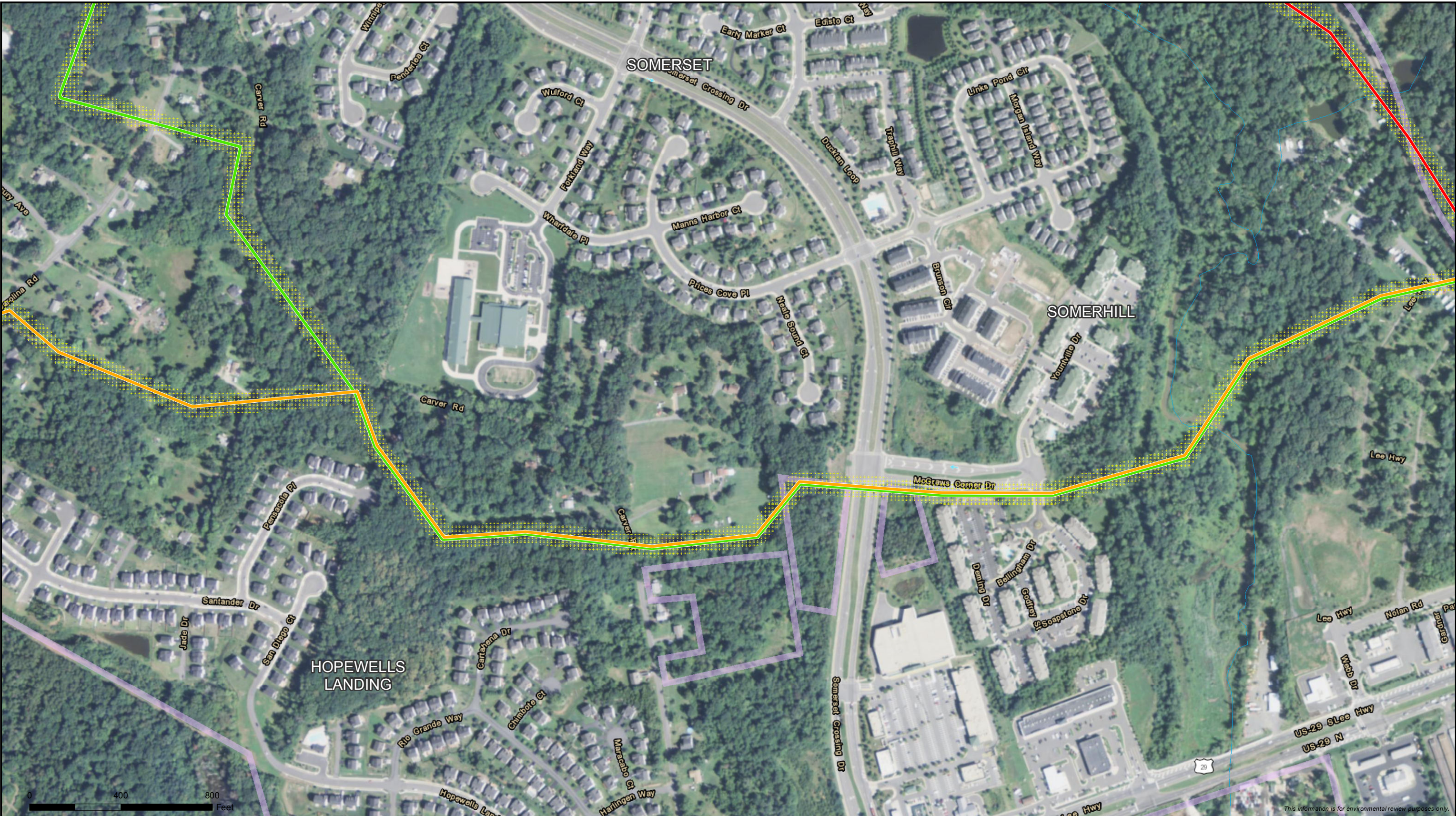
- Madison Alternative
- Carver Road Alternative
- I-66 Hybrid Alternative
- I-66 Overhead Alternative
- Railroad Alternative
- Right of Way
- Planned Development
- Stream



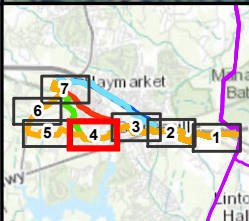
**Madison Alternative Map Set**  
**Gainesville to Haymarket 230kV**  
**Transmission Line and Substation Project**  
Page 3 of 7  
DRAFT - 7/15/2015



This information is for environmental review purposes only.



This information is for environmental review purposes only.



- Madison Alternative
- Carver Road Alternative
- Railroad Alternative
- Right of Way
- Planned Development
- Stream



1:4,800



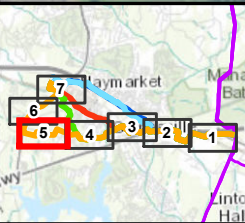
an ERM Group company

**Madison Alternative Map Set**  
**Gainesville to Haymarket 230kV**  
**Transmission Line and Substation Project**  
Page 4 of 7  
DRAFT - 7/15/2015





This information is for environmental review purposes only.



- Madison Alternative
- Right of Way
- Stream
- Planned Development

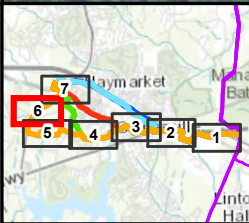


**Madison Alternative Map Set**  
**Gainesville to Haymarket 230kV**  
**Transmission Line and Substation Project**  
Page 5 of 7  
DRAFT - 7/15/2015





This information is for environmental review purposes only.

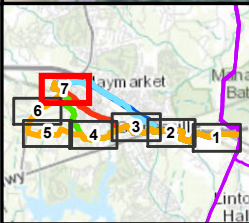


- Madison Alternative
- Right of Way
- Stream
- Planned Development



**Madison Alternative Map Set**  
**Gainesville to Haymarket 230kV**  
**Transmission Line and Substation Project**  
Page 6 of 7  
DRAFT - 7/15/2015





- |                             |                     |                                 |
|-----------------------------|---------------------|---------------------------------|
| — Madison Alternative       | Right of Way        | — Stream                        |
| — Carver Road Alternative   | Planned Development | △ Proposed Haymarket Substation |
| — I-66 Hybrid Alternative   |                     | Haymarket Township Boundary     |
| — I-66 Overhead Alternative |                     |                                 |
| — Railroad Alternative      |                     |                                 |



**Madison Alternative Map Set**  
**Gainesville to Haymarket 230kV**  
**Transmission Line and Substation Project**  
Page 7 of 7  
DRAFT - 7/15/2015



This information is for environmental review purposes only.