

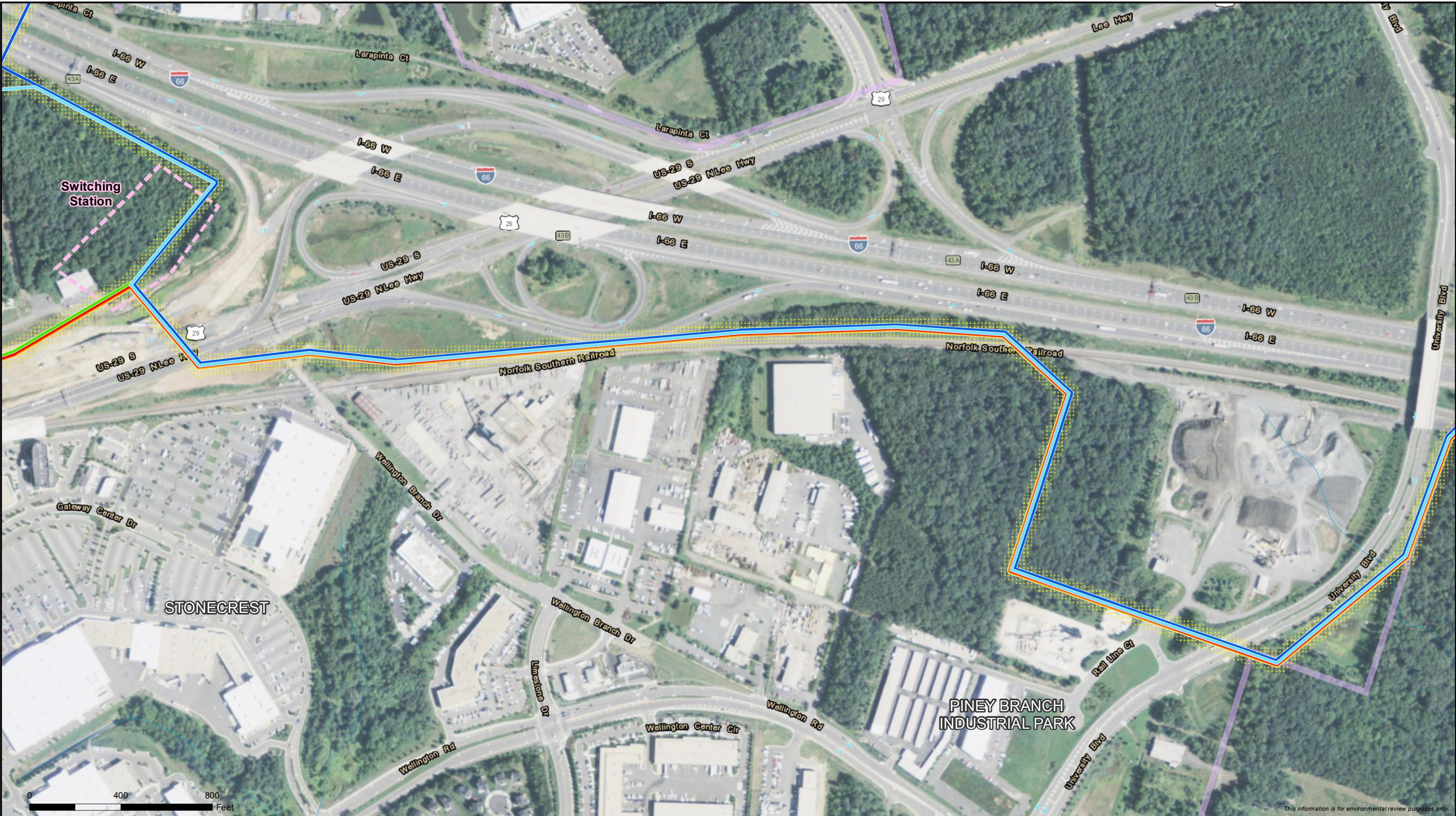
- | | | |
|---------------------------|---------------------|---------------------|
| I-66 Hybrid Alternative | Right of Way | Stream |
| I-66 Overhead Alternative | Planned Development | Existing Substation |
| Carver Road Alternative | | Existing Dominion |
| Madison Alternative | | Transmission Line |
| Railroad Alternative | | |



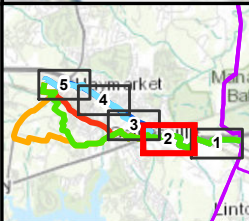
I-66 Alternative Map Set
Gainesville to Haymarket 230kV
Transmission Line and Substation Project
Page 1 of 5
DRAFT - 7/15/2015



This information is for environmental review purposes only.



This information is for environmental review purposes only.

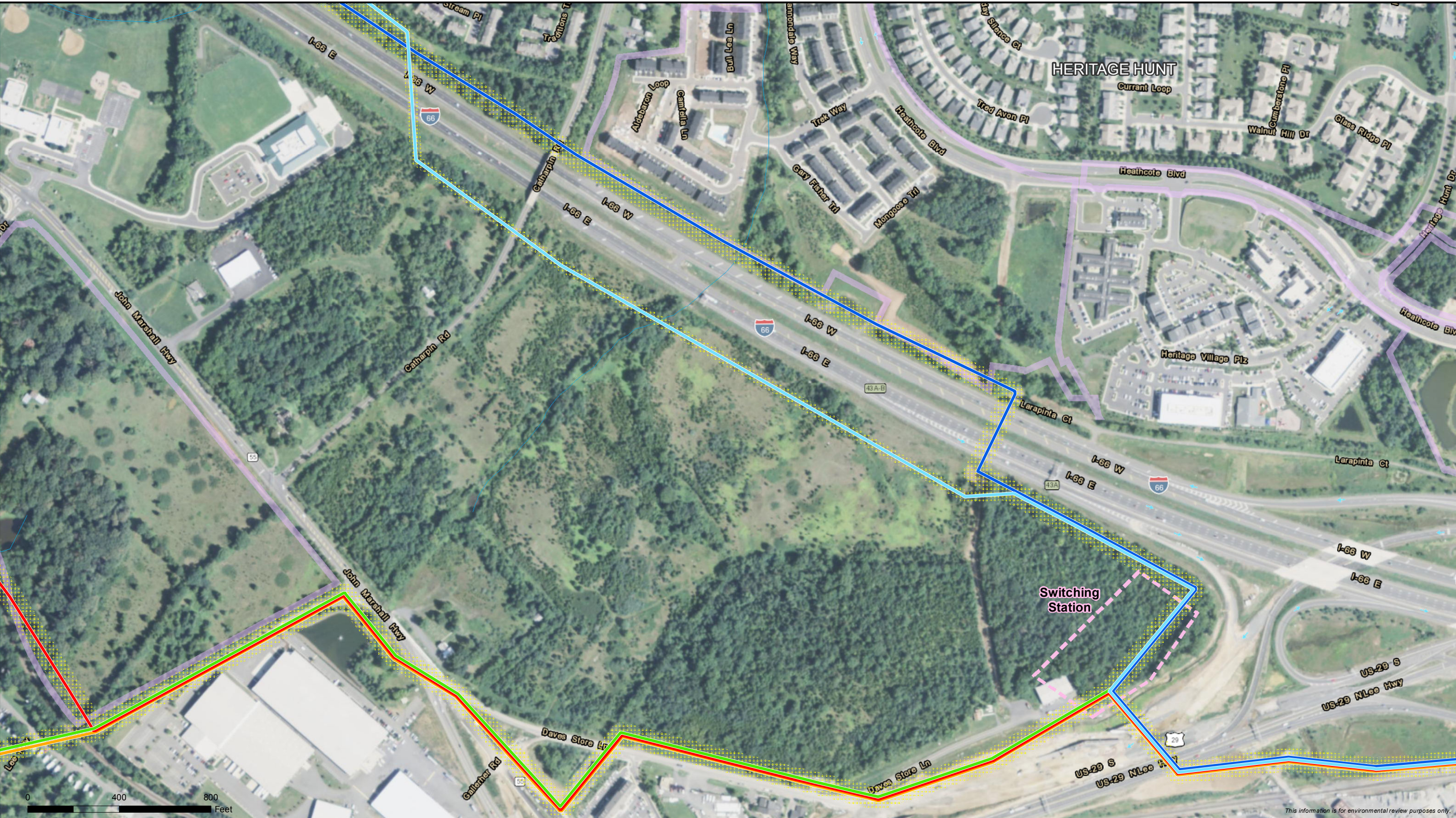


- | | | |
|---------------------------|---------------------|---|
| I-66 Hybrid Alternative | Right of Way | Stream |
| I-66 Overhead Alternative | Planned Development | Preliminary Location of Switching Station |
| Carver Road Alternative | | |
| Madison Alternative | | |
| Railroad Alternative | | |

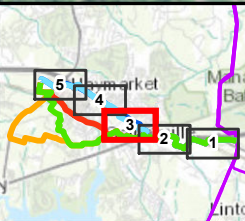


I-66 Alternative Map Set
Gainesville to Haymarket 230kV
Transmission Line and Substation Project
Page 2 of 5
DRAFT - 7/15/2015





This information is for environmental review purposes only.

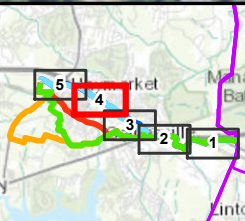
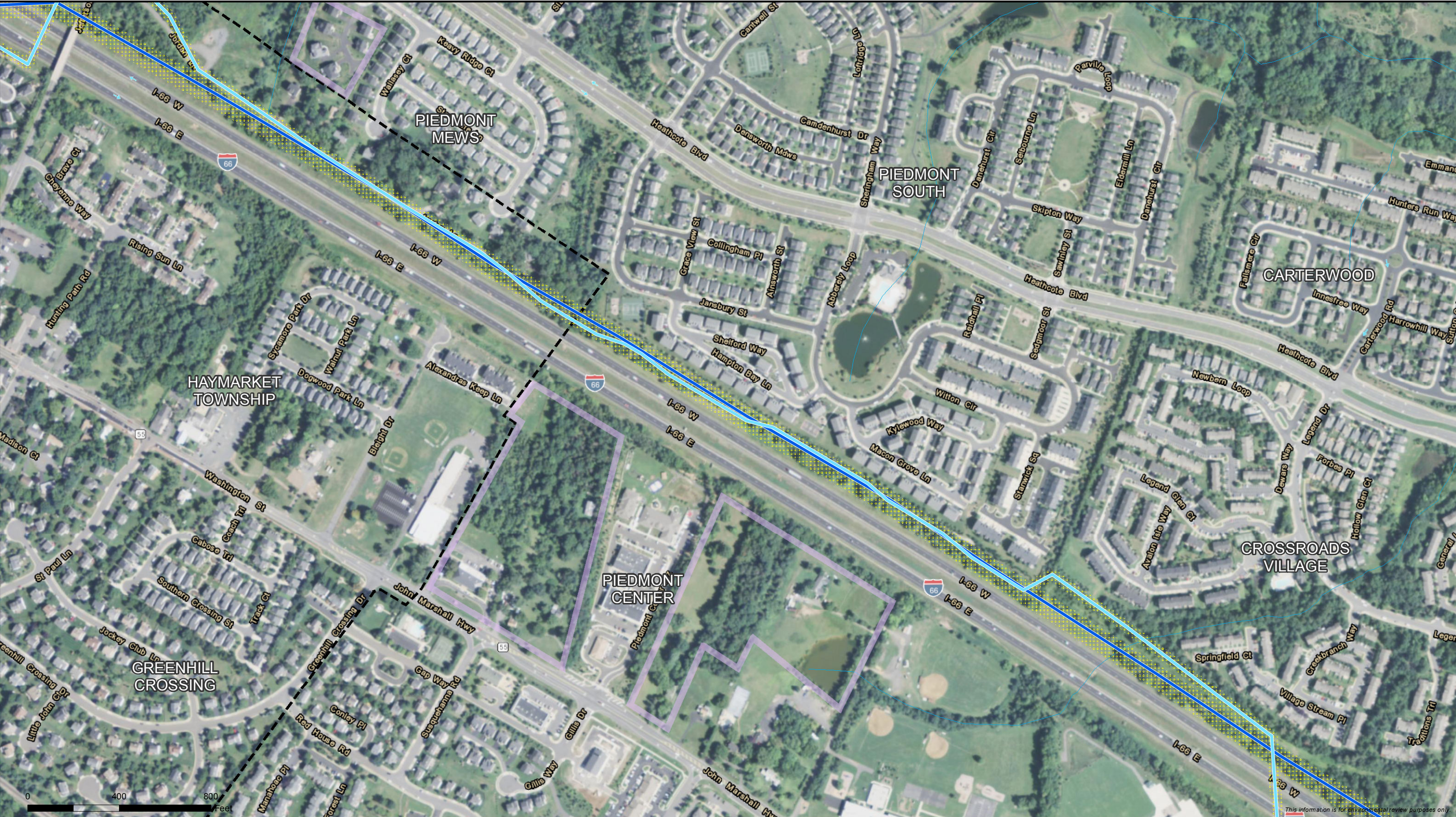


- | | | |
|---------------------------|---------------------|---|
| I-66 Hybrid Alternative | Right of Way | Stream |
| I-66 Overhead Alternative | Planned Development | Preliminary Location of Switching Station |
| Carver Road Alternative | | |
| Madison Alternative | | |
| Railroad Alternative | | |



I-66 Alternative Map Set
Gainesville to Haymarket 230kV
Transmission Line and Substation Project
Page 3 of 5
DRAFT - 7/15/2015



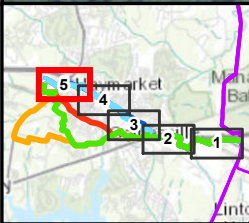
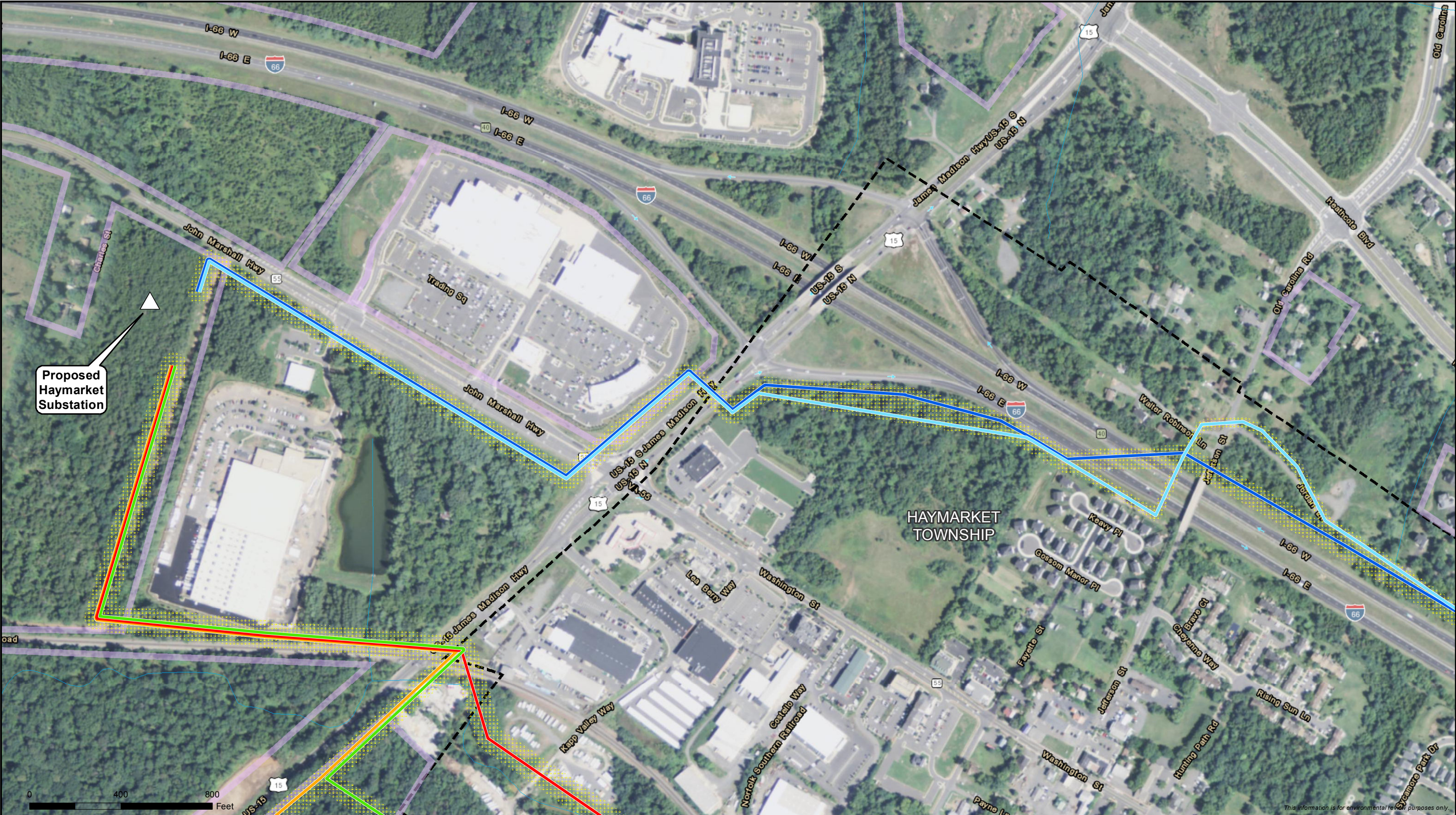


- I-66 Hybrid Alternative
- I-66 Overhead Alternative
- Right of Way
- Planned Development
- Haymarket Township Boundary



I-66 Alternative Map Set
Gainesville to Haymarket 230kV
Transmission Line and Substation Project
Page 4 of 5
DRAFT - 7/15/2015





- I-66 Hybrid Alternative
- I-66 Overhead Alternative
- Carver Road Alternative
- Madison Alternative
- Railroad Alternative
- Right of Way
- Planned Development
- Stream
- Proposed Haymarket Substation
- Haymarket Township Boundary



I-66 Alternative Map Set
Gainesville to Haymarket 230kV
Transmission Line and Substation Project
Page 5 of 5
DRAFT - 7/15/2015

