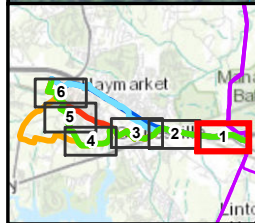


This information is for environmental review purposes only.

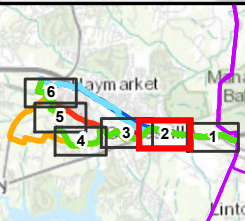
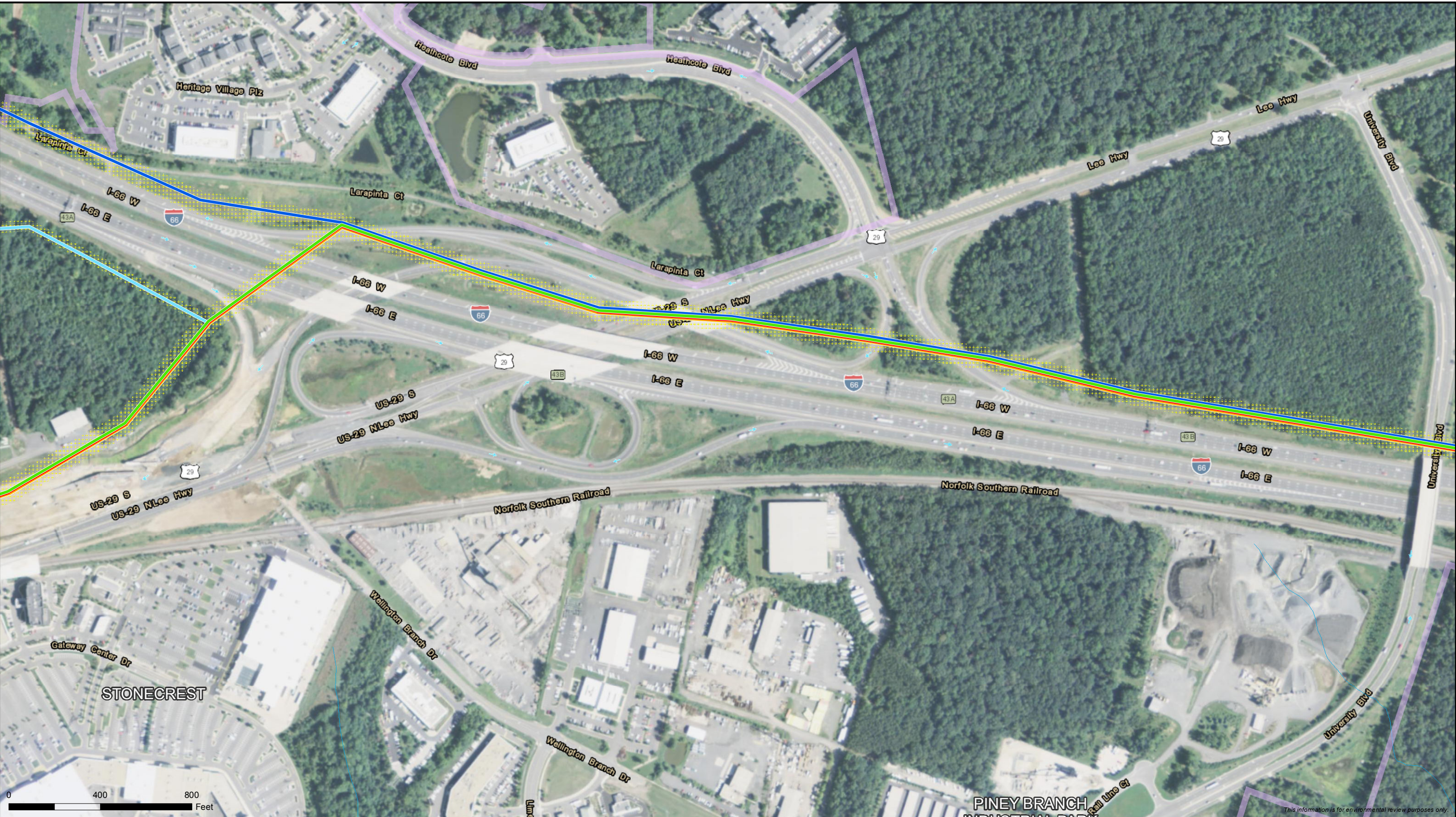


- | | | |
|--|--|---|
| — Carver Road Alternative | Right of Way | — Stream |
| — I-66 Hybrid Alternative | Planned Development | — Existing Dominion Transmission Line |
| — Proposed Route | | |
| — Madison Alternative | | |
| — Railroad Alternative | | |



Carver Road Alternative Map Set
Gainesville to Haymarket 230kV
Transmission Line and Substation Project
 Page 1 of 6
 FILED - November 5, 2015





- Carver Road Alternative
- I-66 Hybrid Alternative
- Proposed Route
- Madison Alternative
- Railroad Alternative
- Right of Way
- Planned Development
- Stream



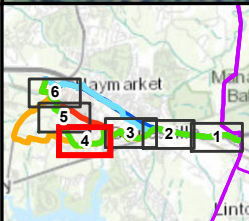
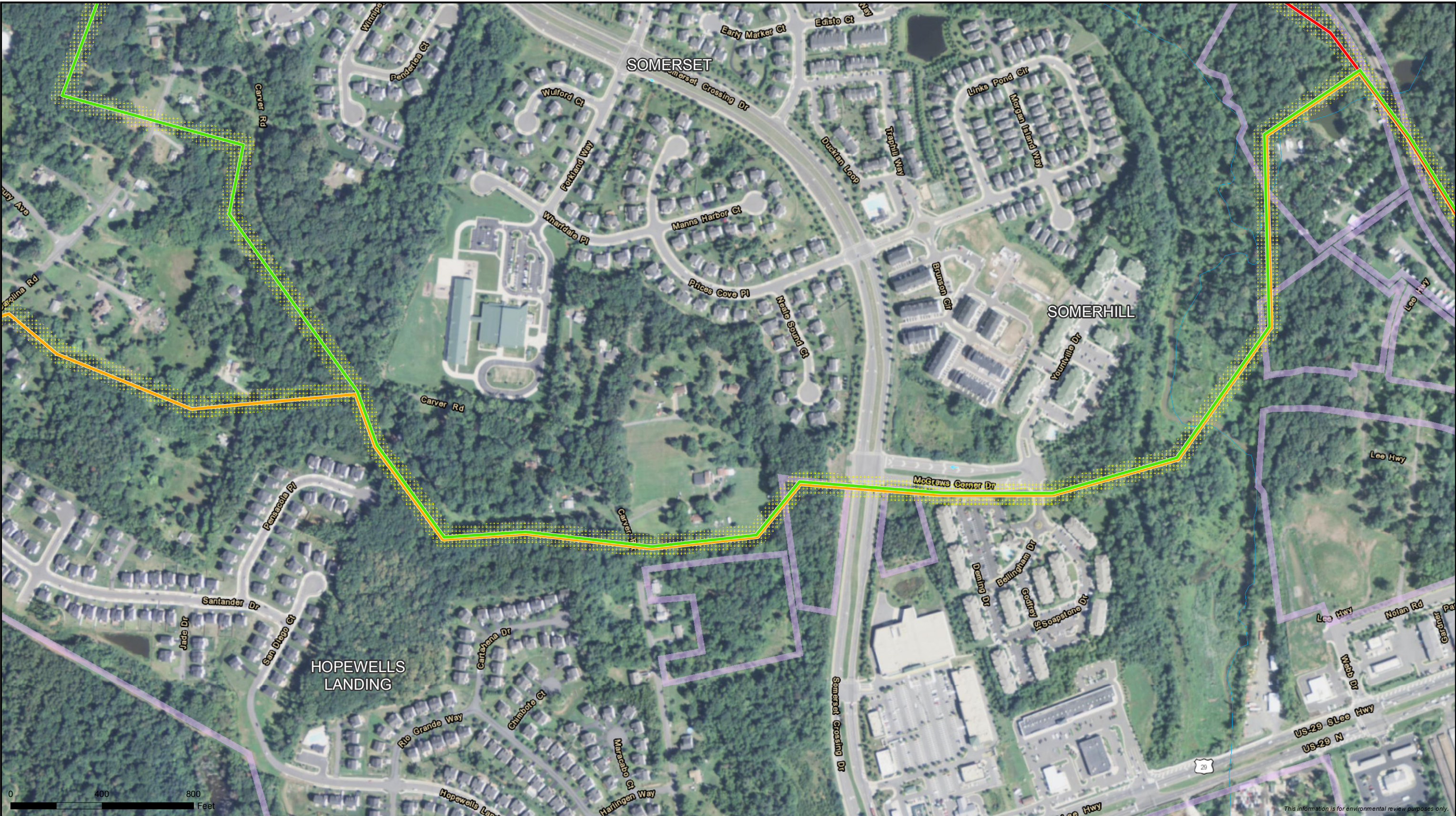
1:4,800



an ERM Group company

Carver Road Alternative Map Set
Gainesville to Haymarket 230kV
Transmission Line and Substation Project
Page 2 of 6
FILED - November 5, 2015





- Carver Road Alternative
- Madison Alternative
- Railroad Alternative
- Right of Way
- Planned Development
- Stream



1:4,800

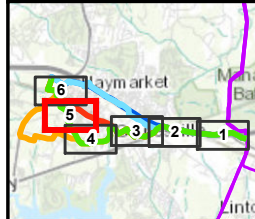


an ERM Group company

Carver Road Alternative Map Set
Gainesville to Haymarket 230kV
Transmission Line and Substation Project
Page 4 of 6
FILED - November 5, 2015



This information is for environmental review purposes only.

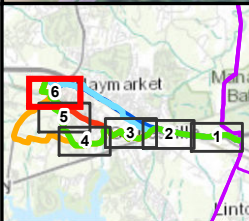
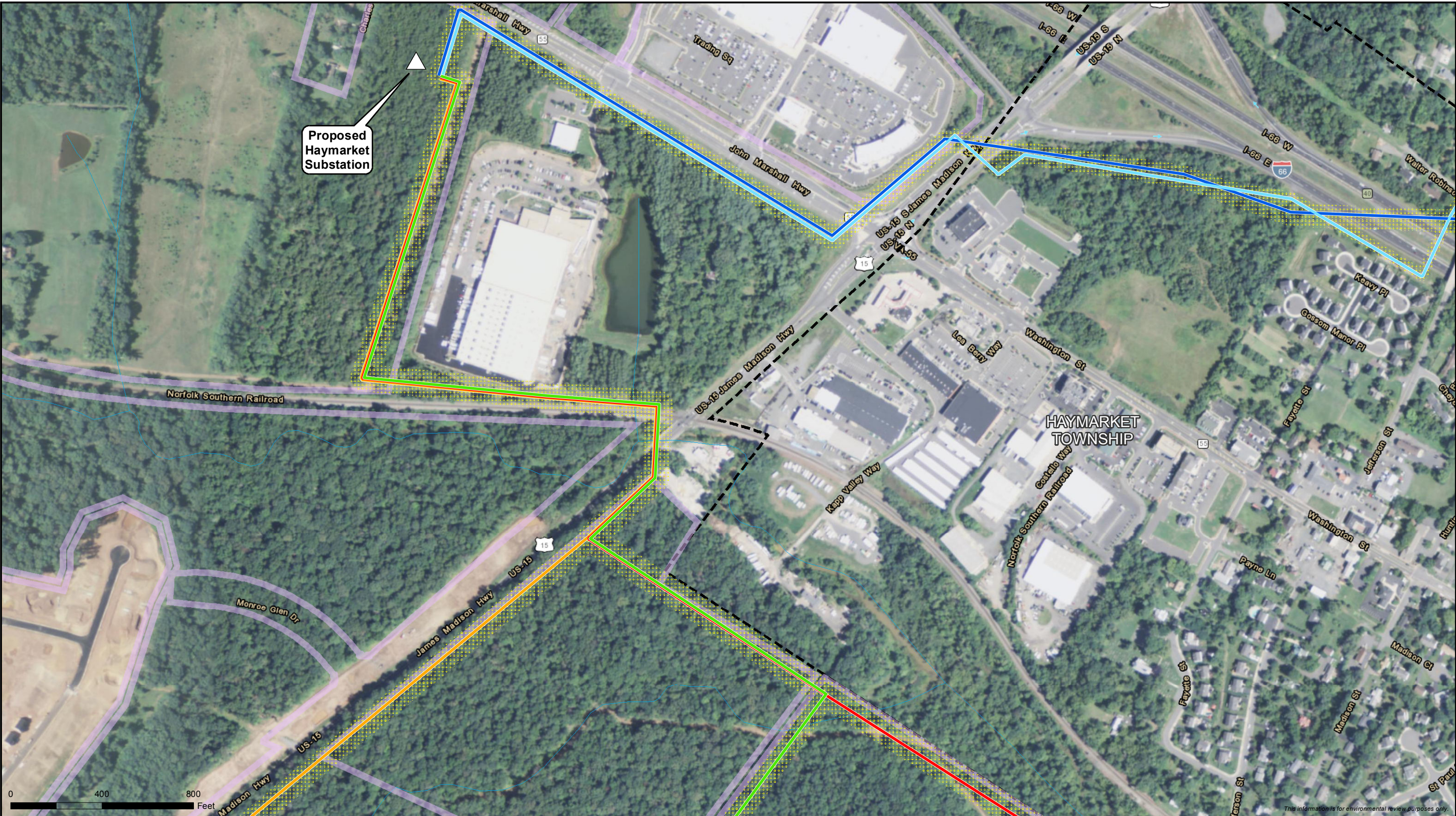


- Carver Road Alternative
- Madison Alternative
- Railroad Alternative
- Right of Way
- Planned Development
- Stream
- Haymarket Township Boundary



Carver Road Alternative Map Set
Gainesville to Haymarket 230kV
Transmission Line and Substation Project
 Page 5 of 6
 FILED - November 5, 2015





- | | | |
|-------------------------|---------------------|-------------------------------|
| Carver Road Alternative | Right of Way | Stream |
| I-66 Hybrid Alternative | Planned Development | Proposed Haymarket Substation |
| Proposed Route | | Haymarket Township Boundary |
| Madison Alternative | | |
| Railroad Alternative | | |



Carver Road Alternative Map Set
Gainesville to Haymarket 230kV
Transmission Line and Substation Project
Page 6 of 6
FILED - November 5, 2015



This information is for environmental review purposes only.